

MONTHLY MEMBERSHIP PROGRESS REPORT

District 318 B

Results as of: 3/31/2020

GMT:

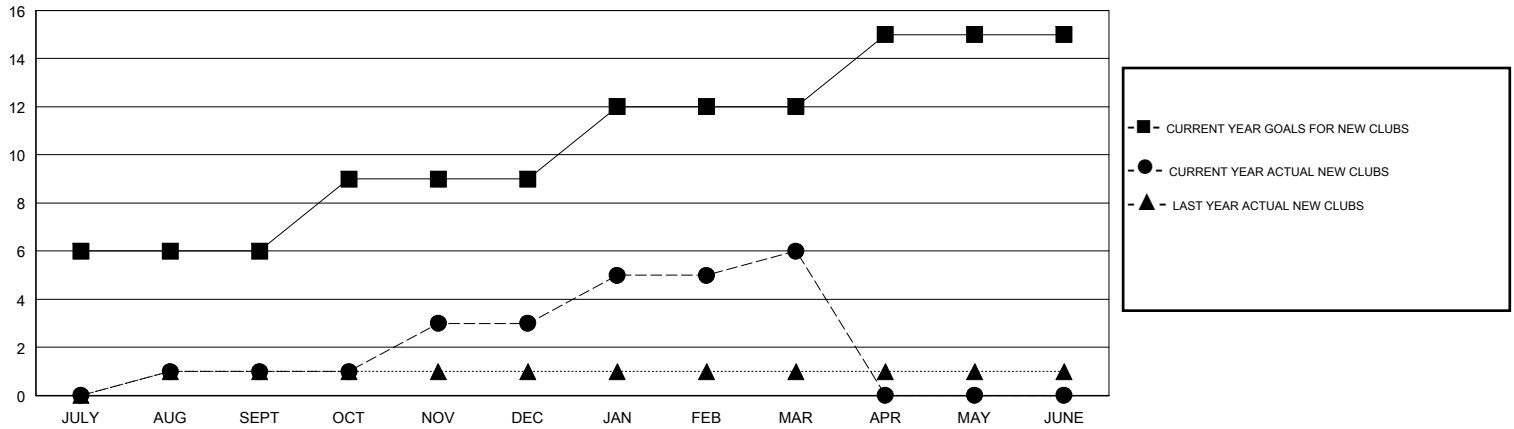
LOCATION INDIA

GMT CA

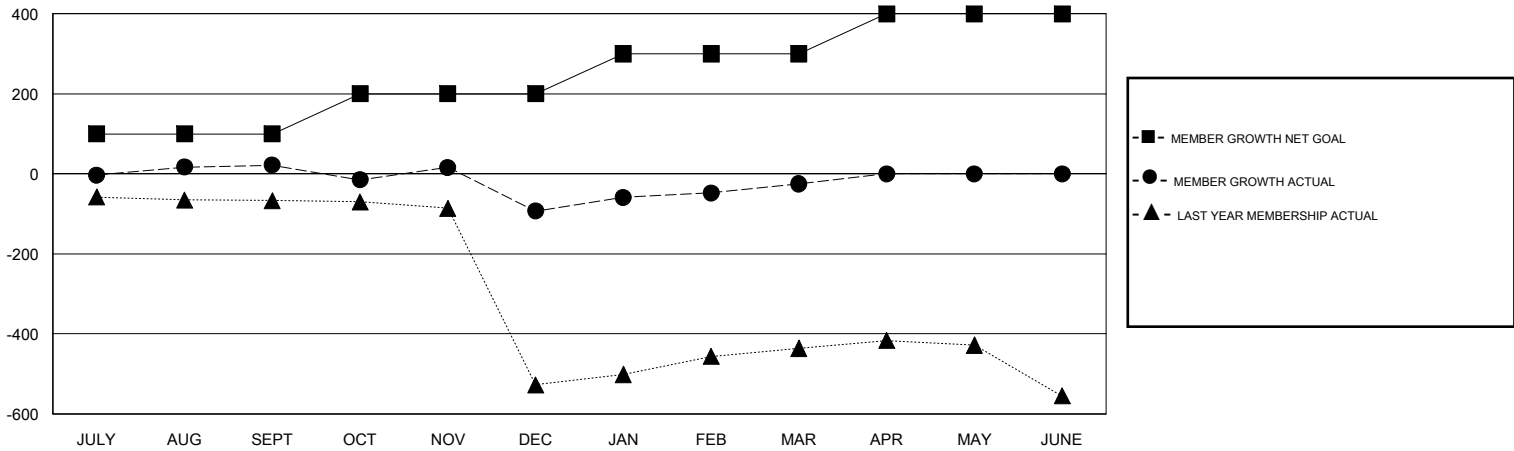
Clubs			
RESULTS FOR 2019-2020			
QUARTER	NEW CLUB GOAL	NEW CLUBS	DROPPED CLUBS
JULY/AUG/SEPT	6	1	0
OCT/NOV/DEC	3	2	2
JAN/FEB/MAR	3	3	0
APR/MAY/JUNE	3	0	0

Members			
RESULTS FOR 2019-2020			
QUARTER	MEMBER GROWTH NET GOAL	MEMBER GROWTH ACTUAL	DROPPED MEMBERS ACTUAL (including transfers)
JULY/AUG/SEPT	100	123	69
OCT/NOV/DEC	100	63	177
JAN/FEB/MAR	100	137	64
APR/MAY/JUNE	100	0	0

GOALS AND ACTUAL NEW CLUBS CUMULATIVE



GOALS AND ACTUAL MEMBERS CUMULATIVE



DROPPED CLUBS: 2	44 CLUBS OF 123 ADDED 1 OR MORE NEW MEMBERS	GENDER DISTRIBUTION MALE 3,300 (86.30%) FEMALE 524 (13.70%)
DROPPED MEMBERS DECEASED 16 CLUB CANCELLED 60 OTHER 234 <hr/> TOTAL 310	CLICK HERE FOR CUMULATIVE MEMBERSHIP DATA	TOTAL FAMILY UNIT MEMBERS 959 FAMILY MEMBERS PAYING HALF DUES 496